



UL Verification Services Inc.
7036 Snowdrift Road
Allentown, PA 18106
610-774-1300



Indoor Distribution Test Report

Relevant Standards
IES LM-79-2008, ANSI C82.77-2002

Prepared For
TechBrite LLC
1000 Kieley Pl
Cincinnati, OH 45217
United States

Catalog Number
LT424SS1B40DC000,RT424SS1B40DC000
Order Number
11748594
Test Number
11748594.03

Test Date

2017-05-08

Prepared By

Dane Hernandez-Adams, Technician

Approved By

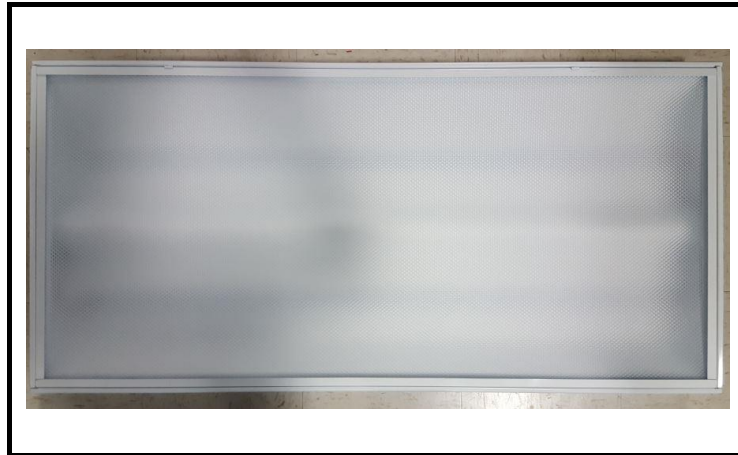
Tiffany Hamm, Project Handler

The results contained in this report pertain only to the tested sample.
This report shall not be reproduced, except in full, without written approval of Underwriters Laboratories.
This report must not be used by the client to claim product certification, approval, or endorsement by
NVLAP, NIST, or any agency of the Federal Government.



Luminaire Description: White steel housing, prismatic lens enclosure. Tested in an A.L.P EL 2x4 housing.
Lamp: 224 white LEDs
Mounting: Surface – Ceiling
Ballast/Driver: Everline D10CC55UNVTZ-C

Luminaire



Luminaire Characteristics

Luminous Length: 45.00 in.
Luminous Width: 21.00 in.

Summary of Results

Total Luminaire Output: 5883 Lumens
Luminaire Efficacy: 116.6 lm/w
Maximum Candela: 2432 Candela

Test Conditions

Test Temperature: 25.0 °C
Voltage: 120.0 VAC
Current: 0.4213 A
Power: 50.45 W
Power Factor: 0.998
Frequency: 60 Hz
Current THD: 5.15 %

Laboratory results may not be representative of field performance
Ballast factors have not been applied



Distribution - Goniophotometer

Distribution Test Conditions

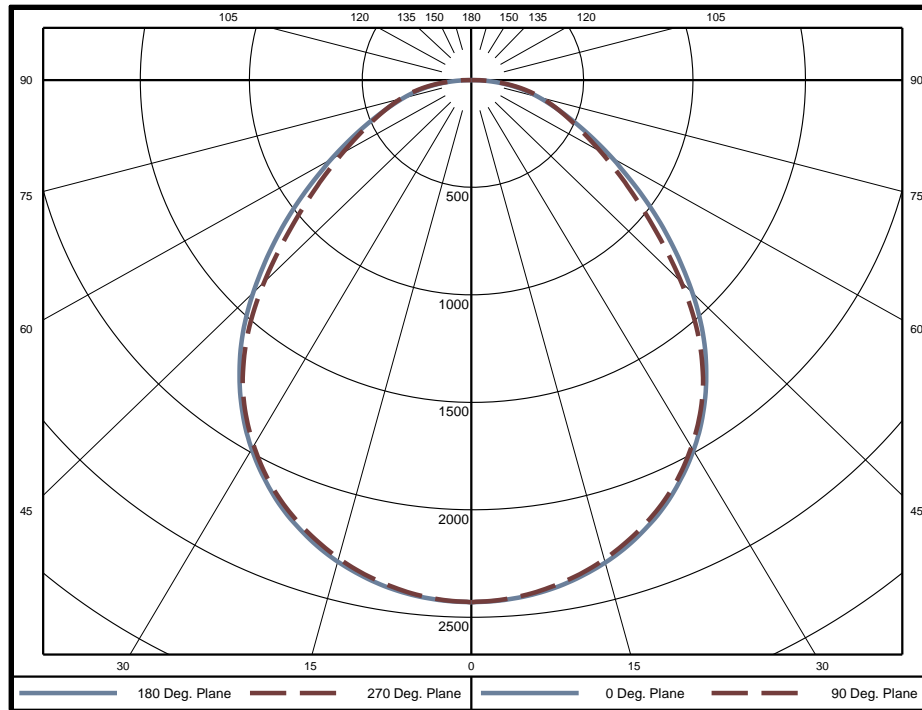
Temperature	Voltage	Current	Power	Power Factor	Frequency	Current THD
25.0 °C	120.0 VAC	0.4213 A	50.45 W	0.998	60 Hz	5.15 %

Summary of Results

Spacing Criteria
 0-180: 1.22
 90-270: 1.22

Total Lumen Output: 5883 Lumens
Luminaire Efficacy: 116.6 lm/w
Maximum Candela: 2432 Candela

Polar Plot



Zonal Lumen Summary

Zone	Lumens	% of Luminaire	Zone	Lumens	% of Luminaire	Zone	Lumens	% of Luminaire
0-5	58.0	1.0%	60-65	302.7	5.1%	120-125	0	0.0%
5-10	171.6	2.9%	65-70	243.4	4.1%	125-130	0	0.0%
10-15	278.7	4.7%	70-75	193.6	3.3%	130-135	0	0.0%
15-20	374.9	6.4%	75-80	146.5	2.5%	135-140	0	0.0%
20-25	456.6	7.8%	80-85	93.9	1.6%	140-145	0	0.0%
25-30	519.6	8.8%	85-90	36.4	0.6%	145-150	0	0.0%
30-35	559.5	9.5%	90-95	0	0.0%	150-155	0	0.0%
35-40	572.4	9.7%	95-100	0	0.0%	155-160	0	0.0%
40-45	554.9	9.4%	100-105	0	0.0%	160-165	0	0.0%
45-50	507.9	8.6%	105-110	0	0.0%	165-170	0	0.0%
50-55	442.0	7.5%	110-115	0	0.0%	170-175	0	0.0%
55-60	370.5	6.3%	115-120	0	0.0%	175-180	0	0.0%

Zone	Lumens	% of Luminaire
0-40	2991	50.8%
0-60	4867	82.7%
0-90	5883	100.0%
90-180	0	0.0%



Candela Tabulation
Horizontal Angle (Degrees)

Vertical Angle (Degrees)	0	22.5	45	67.5	90	112.5	135	157.5	180	202.5	225	247.5	270	292.5	315	337.5	
	0	2430	2430	2430	2430	2430	2430	2430	2430	2430	2430	2430	2430	2430	2430	2430	2430
	5	2418	2419	2420	2417	2414	2417	2420	2419	2418	2419	2420	2417	2414	2417	2420	2419
	10	2384	2383	2381	2377	2373	2377	2381	2383	2384	2383	2381	2377	2373	2377	2381	2383
	15	2325	2321	2318	2314	2310	2314	2318	2321	2325	2321	2318	2314	2310	2314	2318	2321
	20	2242	2235	2230	2227	2224	2227	2230	2235	2242	2235	2230	2227	2224	2227	2230	2235
	25	2133	2124	2119	2118	2116	2118	2119	2124	2133	2124	2119	2118	2116	2118	2119	2124
	30	1996	1986	1980	1979	1979	1979	1980	1986	1996	1986	1980	1979	1979	1979	1980	1986
	35	1831	1817	1813	1808	1812	1808	1813	1817	1831	1817	1813	1808	1812	1808	1813	1817
	40	1638	1623	1612	1602	1601	1602	1612	1623	1638	1623	1612	1602	1601	1602	1612	1623
	45	1412	1405	1389	1356	1342	1356	1389	1405	1412	1405	1389	1356	1342	1356	1389	1405
	50	1172	1174	1148	1096	1078	1096	1148	1174	1172	1174	1148	1096	1078	1096	1148	1174
	55	943	941	908	867	858	867	908	941	943	941	908	867	858	867	908	941
	60	740	731	704	685	680	685	704	731	740	731	704	685	680	685	704	731
	65	568	557	537	537	538	537	537	557	568	557	537	537	538	537	537	557
	70	430	424	410	424	427	424	410	424	430	424	410	424	427	424	410	424
	75	320	319	314	327	333	327	314	319	320	319	314	327	333	327	314	319
80	221	218	222	231	236	231	222	218	221	218	222	231	236	231	222	218	
85	114	114	117	123	124	123	117	114	114	114	117	123	124	123	117	114	
90	0	0	0	0	0	0	0	0	0	0	0	0	0	0	0	0	
95	0	0	0	0	0	0	0	0	0	0	0	0	0	0	0	0	
100	0	0	0	0	0	0	0	0	0	0	0	0	0	0	0	0	
105	0	0	0	0	0	0	0	0	0	0	0	0	0	0	0	0	
110	0	0	0	0	0	0	0	0	0	0	0	0	0	0	0	0	
115	0	0	0	0	0	0	0	0	0	0	0	0	0	0	0	0	
120	0	0	0	0	0	0	0	0	0	0	0	0	0	0	0	0	
125	0	0	0	0	0	0	0	0	0	0	0	0	0	0	0	0	
130	0	0	0	0	0	0	0	0	0	0	0	0	0	0	0	0	
135	0	0	0	0	0	0	0	0	0	0	0	0	0	0	0	0	
140	0	0	0	0	0	0	0	0	0	0	0	0	0	0	0	0	
145	0	0	0	0	0	0	0	0	0	0	0	0	0	0	0	0	
150	0	0	0	0	0	0	0	0	0	0	0	0	0	0	0	0	
155	0	0	0	0	0	0	0	0	0	0	0	0	0	0	0	0	
160	0	0	0	0	0	0	0	0	0	0	0	0	0	0	0	0	
165	0	0	0	0	0	0	0	0	0	0	0	0	0	0	0	0	
170	0	0	0	0	0	0	0	0	0	0	0	0	0	0	0	0	
175	0	0	0	0	0	0	0	0	0	0	0	0	0	0	0	0	
180	0	0	0	0	0	0	0	0	0	0	0	0	0	0	0	0	

Average Luminance (cd/m²)
Horizontal Angle (Degrees)

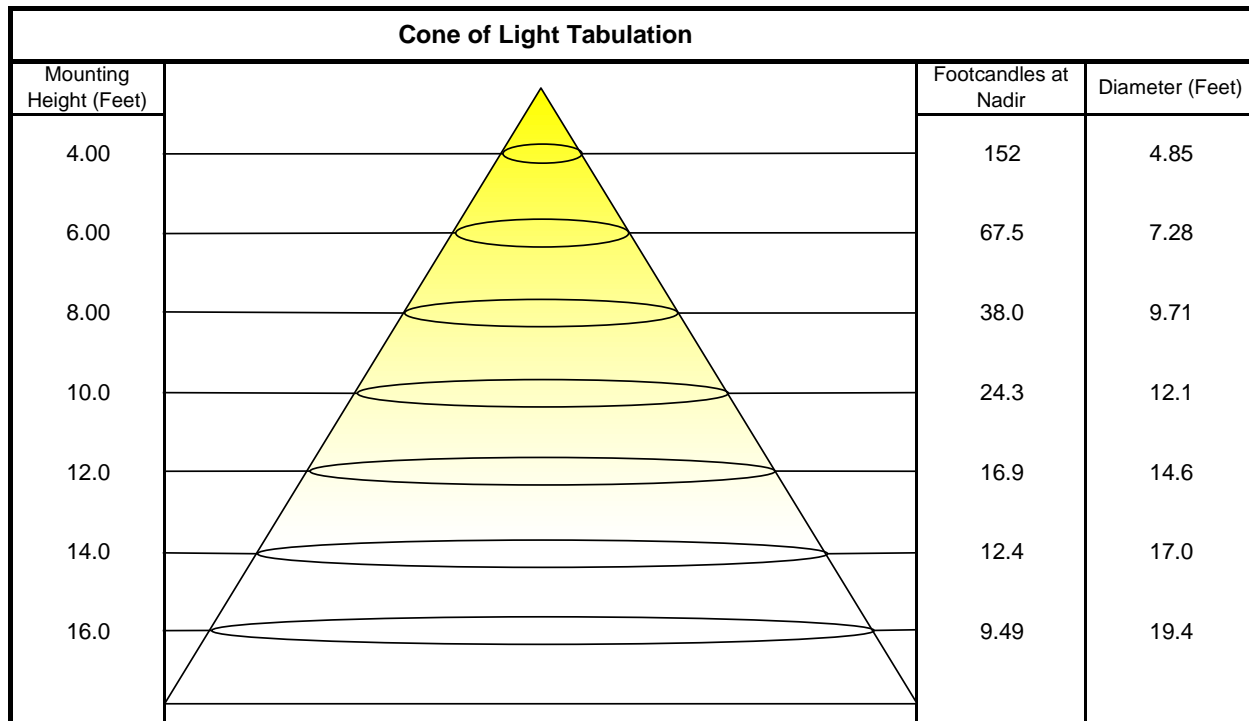
Vertical Angle (Degrees)	0	45	90	
	0	3986	3986	3986
	45	3274	3221	3114
	55	2696	2595	2453
	65	2204	2083	2087
	75	2028	1992	2113
	85	2142	2198	2337



Utilization of Lumens - Zonal Cavity Method

Effective Floor Cavity Reflectance 20%																		
Ceiling Cavity Reflectance	80				70				50			30			10			0
Wall Reflectance	70	50	30	10	70	50	30	10	50	30	10	50	30	10	50	30	10	0
Room Cavity Ratio (RCR)	** Values are expressed as Lumens delivered to the task surface **																	
0	7004	7004	7004	7004	6841	6841	6841	6841	6537	6537	6537	6259	6259	6259	6003	6003	6003	5883
1	6427	6157	5916	5698	6268	6024	5804	5605	5775	5594	5428	5546	5399	5262	5335	5217	5106	4985
2	5882	5419	5036	4715	5729	5309	4957	4659	5102	4806	4551	4911	4664	4447	4734	4531	4349	4225
3	5393	4801	4343	3979	5250	4709	4285	3943	4536	4173	3874	4376	4067	3807	4227	3966	3742	3618
4	4962	4287	3793	3415	4830	4210	3748	3392	4064	3663	3345	3929	3582	3300	3803	3504	3257	3133
5	4582	3856	3348	2973	4461	3791	3314	2957	3668	3247	2925	3553	3184	2894	3446	3123	2864	2743
6	4245	3490	2983	2620	4135	3435	2956	2608	3331	2904	2585	3233	2853	2563	3142	2805	2541	2424
7	3947	3179	2680	2331	3847	3132	2659	2323	3042	2616	2306	2959	2576	2290	2880	2536	2274	2160
8	3682	2911	2426	2093	3592	2871	2408	2087	2794	2374	2074	2722	2341	2062	2654	2308	2050	1941
9	3446	2680	2210	1893	3365	2645	2196	1889	2579	2167	1879	2516	2140	1869	2457	2113	1860	1755
10	3236	2479	2026	1724	3162	2449	2014	1721	2391	1990	1713	2337	1967	1706	2285	1944	1698	1598

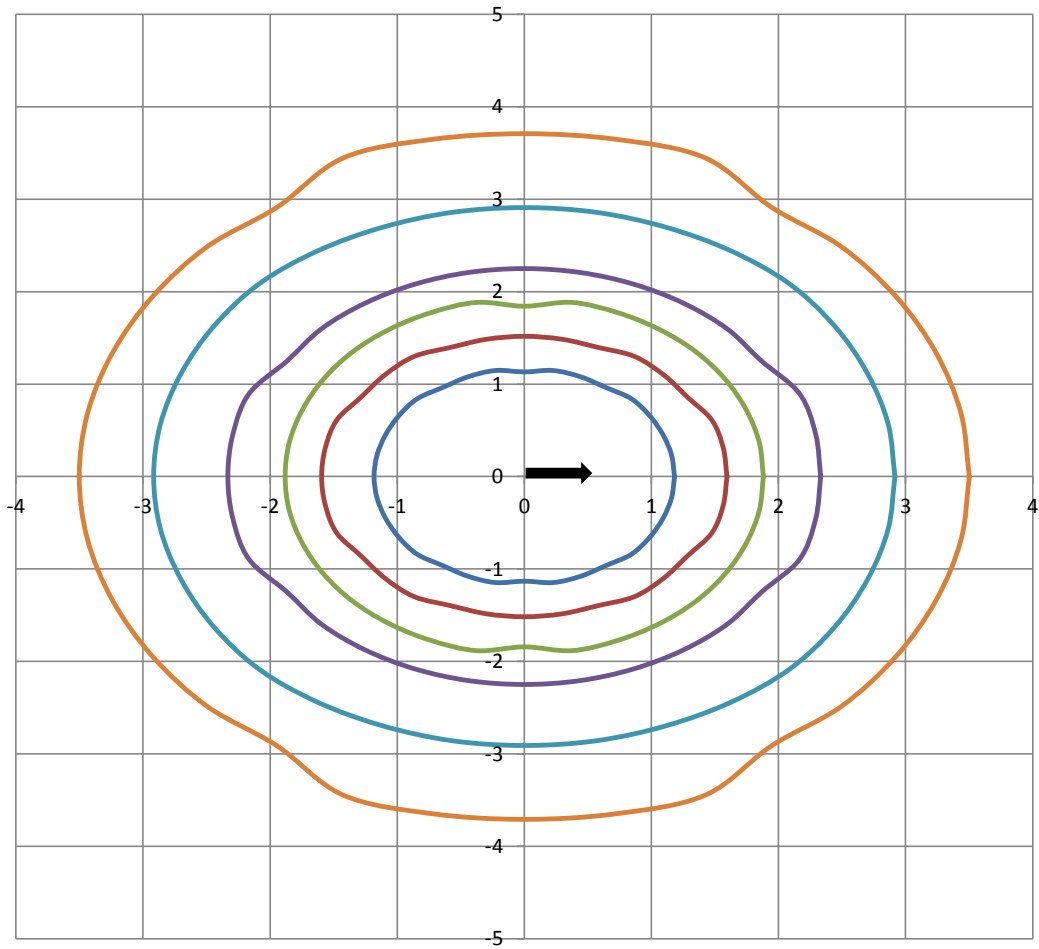
Beam and Field Information	
CIE Type:	Direct
Center Beam Intensity:	2430 Candela
Central Cone Intensity:	2426 Candela
Beam Flux:	3900.4 Lumens
Beam Angle (0-180):	98.2 Degrees
Beam Angle (90-270):	94.7 Degrees
Field Angle (0-180):	157.9 Degrees
Field Angle (90-270):	159.3 Degrees





ISOFootcandle Plot

Mounting Height - 8 Feet



Grid Lines in Units of Mounting Height

