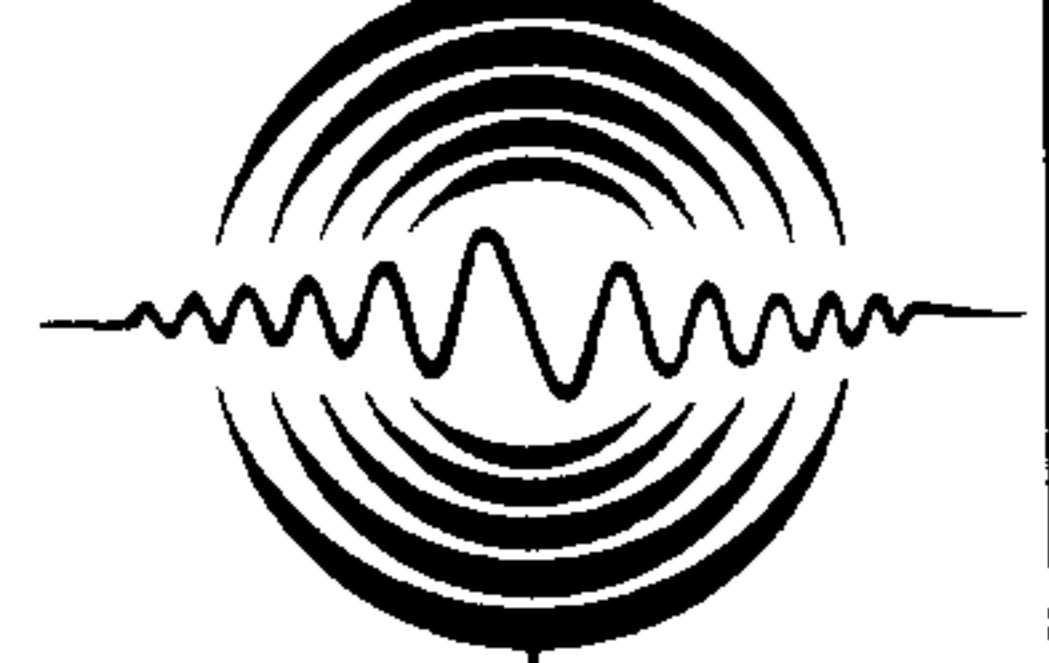


BUILDING ACOUSTICS & LIGHTING LABORATORIES, INC.

1618 HEADLAND DR.
 FENTON, MO 63026
 (636) - 343-6006
 (636) - 343-6051 FAX

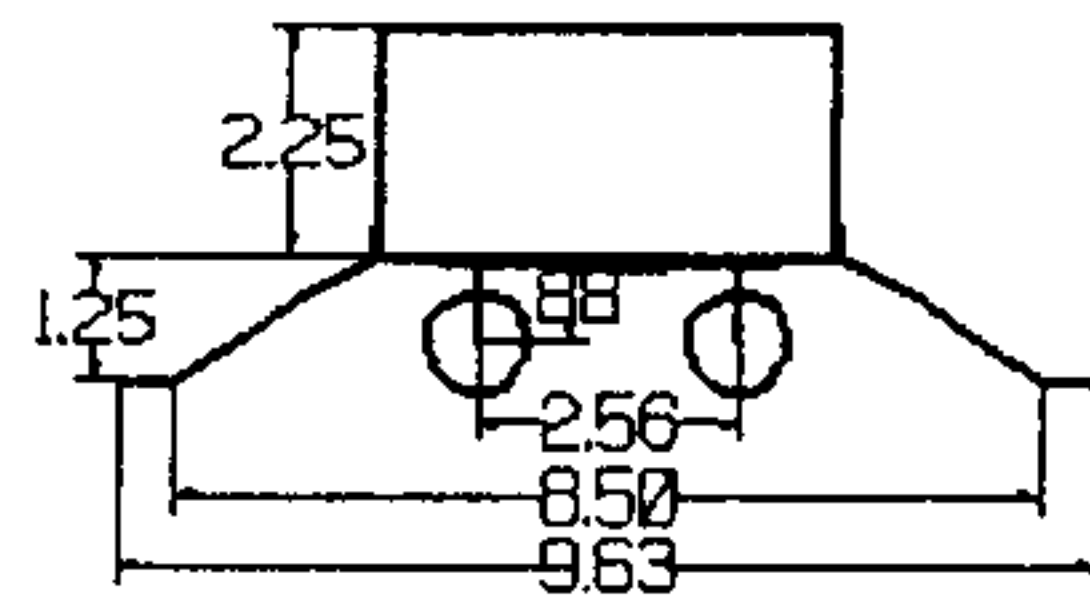
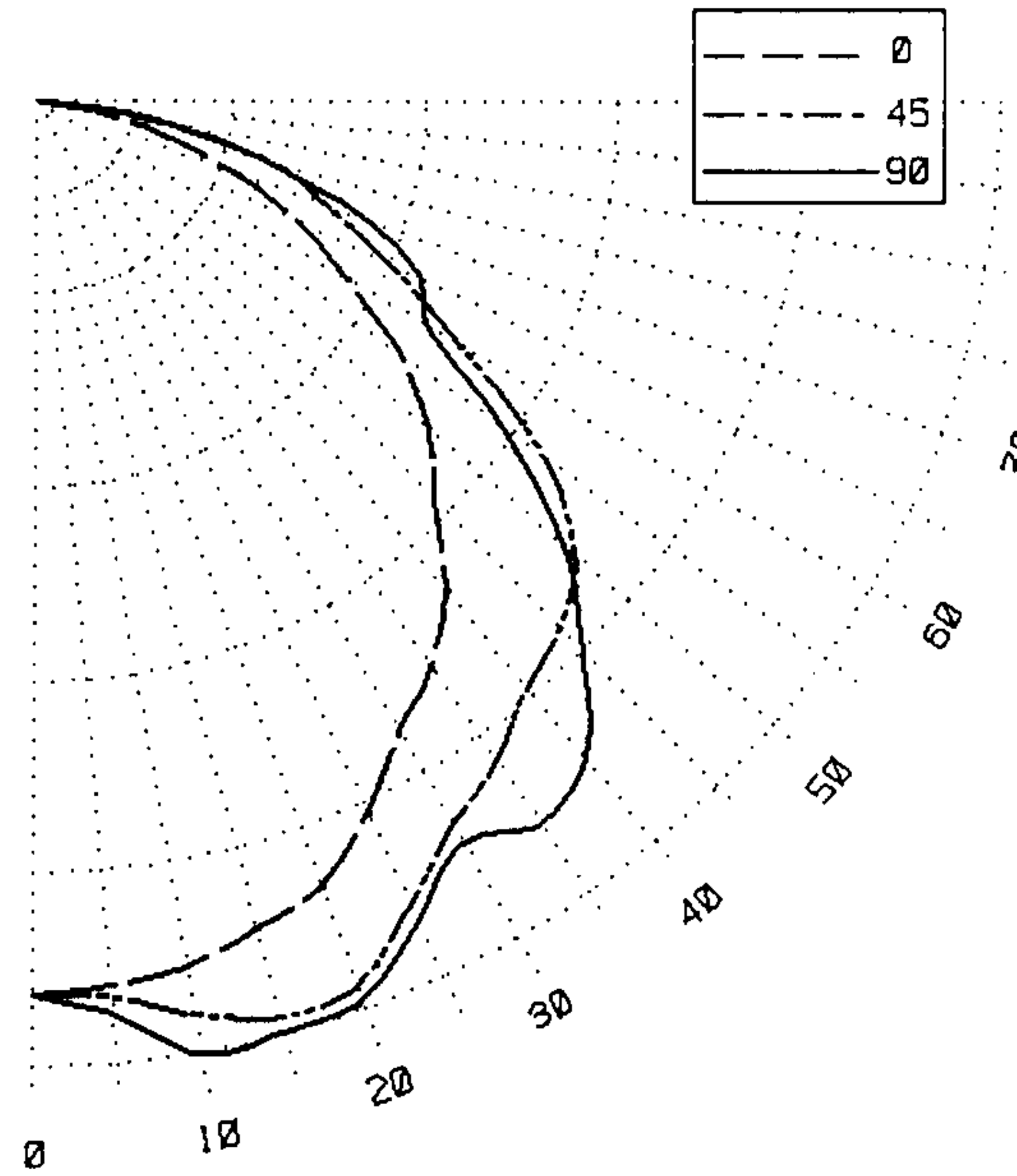


BALLABS CERTIFIED TEST REPORT NO.: 15462.0
 PREPARED FOR: TECHBRITE - CINCINNATI, OH
 DESCRIPTION: 4/32W T8 LAMP 8' TECHSTRIP LUMINAIRE
 MIRO4 FORMED ALUMINUM REFLECTOR
 SYLVANIA BALLAST #QHE4x32T8/UNVISH WATTS=138
 CATALOG NBR: T844T81MRHQ0000 R894T81MRHQ0000
 LAMP TYPE : FO32/850/XPS/ECO3 RATED LUMENS 3100. NBR. LAMPS:- 4

DATE 06/03/10

CANDLEPOWER DISTRIBUTION

VERT ANG	HORIZONTAL ANGLE					ZONAL LUMENS
	0	22.5	45	67.5	90	
0	3379.	3379.	3379.	3379.	3379.	
5	3355.	3371.	3396.	3443.	3461.	325.0
10	3318.	3379.	3501.	3618.	3652.	
15	3239.	3375.	3581.	3638.	3641.	994.5
20	3157.	3371.	3560.	3604.	3616.	
25	2967.	3255.	3358.	3421.	3427.	1531.0
30	2749.	3061.	3159.	3200.	3236.	
35	2602.	2925.	3044.	3229.	3331.	1910.4
40	2403.	2745.	2887.	3201.	3243.	
45	2124.	2479.	2810.	2941.	2929.	2082.6
50	1931.	2292.	2663.	2677.	2609.	
55	1671.	2036.	2343.	2245.	2153.	1914.5
60	1344.	1767.	1844.	1708.	1703.	
65	1093.	1574.	1469.	1516.	1596.	1465.0
70	799.	1212.	1171.	1326.	1336.	
75	514.	771.	942.	938.	921.	890.9
80	266.	526.	561.	554.	525.	
85	85.	248.	200.	207.	180.	214.8
90	16.	9.	8.	7.	7.	



[Handwritten signature]

LUMEN SUMMARY

ZONE	LUMENS	%LAMP	%FIXT	ZONE	LUMENS	%LAMP	%FIXT
0- 30	2851.	23.0	25.2	90-120	0.	.0	.0
0- 40	4761.	38.4	42.0	90-130	0.	.0	.0
0- 60	8758.	70.6	77.3	90-150	0.	.0	.0
0- 90	11329.	91.4	100.0	90-180	0.	.0	.0
TOTAL LUMINAIRE = 0-180					11329.	91.4	100.0

IES SPACING CRITERIA: END= 1.2 DIAGONAL = 1.4 CROSS= 1.5

SIGNIFICANCE OF THE TEST IS LIMITED TO THE DEGREE THAT THE TESTED SAMPLE IS REPRESENTATIVE. OTHER FACTORS AFFECT FIELD PERFORMANCE.

BALLABS CERTIFIED TEST REPORT NO.: 15462.0 DATE 06/03/10
 PREPARED FOR: TECHBRITE - CINCINNATI, OH
 DESCRIPTION: 4/32W T8 LAMP 8'TECHSTRIP LUMINAIRE
 MIRO4 FORMED ALUMINUM REFLECTOR
 SYLVANIA BALLAST #QHE4x32T8/UNVISH WATTS=138
 CATALOG NBR: T844T81MRHQ0000 R894T81MRHQ0000
 LAMP TYPE : FO32/850/XPS/ECO3 RATED LUMENS 3100. NBR. LAMPS:- 4

LUMINANCES-CD/SQ-M
 HORIZONTAL ANGLE

VERT ANGLE	0	45	90
45	5093.	6737.	7023.
55	4939.	6925.	6364.
65	4385.	5893.	6402.
75	3367.	6170.	6033.
85	1653.	3890.	3501.

MAXIMUM BRIGHTNESSES NOT MEASURED

ZONAL CAVITY COEFFICIENTS OF UTILIZATION

EFFECTIVE FLOOR CAVITY REFLECTANCE=.20

CEILING	.80				.70				.50				.30				.10				.00											
WALL	.70	.50	.30	.10	.70	.50	.30	.10	.50	.30	.10	.50	.30	.10	.50	.30	.10	.50	.30	.10	.50	.30	.10	.50	.30	.10	.50	.30	.10	.50	.30	.10
RCR																																
0	1.09	1.09	1.09	1.09	1.06	1.06	1.06	1.06	1.02	1.02	1.02	.97	.97	.97	.93	.93	.93	.93	.93	.93	.93	.93	.93	.93	.93	.93	.93	.93	.93	.93	.93	.93
1	1.00	.96	.92	.88	.97	.94	.90	.87	.90	.87	.84	.86	.84	.82	.83	.81	.79	.79	.77	.77	.77	.77	.77	.77	.77	.77	.77	.77	.77	.77	.77	.77
2	.91	.84	.78	.72	.89	.82	.76	.72	.79	.74	.70	.76	.72	.68	.73	.70	.67	.67	.65	.65	.65	.65	.65	.65	.65	.65	.65	.65	.65	.65	.65	.65
3	.83	.74	.67	.61	.81	.72	.66	.60	.70	.64	.59	.67	.62	.58	.65	.61	.57	.57	.55	.55	.55	.55	.55	.55	.55	.55	.55	.55	.55	.55	.55	.55
4	.76	.65	.57	.51	.74	.64	.57	.51	.62	.55	.50	.60	.54	.50	.58	.53	.49	.49	.47	.47	.47	.47	.47	.47	.47	.47	.47	.47	.47	.47	.47	.47
5	.69	.57	.49	.43	.67	.56	.49	.43	.55	.48	.42	.53	.47	.42	.51	.46	.42	.42	.40	.40	.40	.40	.40	.40	.40	.40	.40	.40	.40	.40	.40	.40
6	.64	.51	.43	.37	.62	.50	.43	.37	.49	.42	.37	.47	.41	.36	.46	.40	.36	.36	.34	.34	.34	.34	.34	.34	.34	.34	.34	.34	.34	.34	.34	.34
7	.58	.46	.38	.32	.57	.45	.37	.32	.44	.37	.32	.42	.36	.31	.41	.35	.31	.31	.29	.29	.29	.29	.29	.29	.29	.29	.29	.29	.29	.29	.29	.29
8	.54	.41	.33	.28	.52	.40	.33	.27	.39	.32	.27	.38	.32	.27	.37	.31	.27	.27	.25	.25	.25	.25	.25	.25	.25	.25	.25	.25	.25	.25	.25	.25
9	.49	.37	.29	.24	.48	.36	.29	.24	.35	.28	.23	.34	.28	.23	.33	.27	.23	.23	.21	.21	.21	.21	.21	.21	.21	.21	.21	.21	.21	.21	.21	.21
10	.46	.33	.26	.21	.45	.33	.26	.21	.32	.25	.21	.31	.25	.20	.30	.24	.20	.20	.19	.19	.19	.19	.19	.19	.19	.19	.19	.19	.19	.19	.19	.19

TESTED IN ACCORDANCE WITH CURRENT IES PROCEDURES