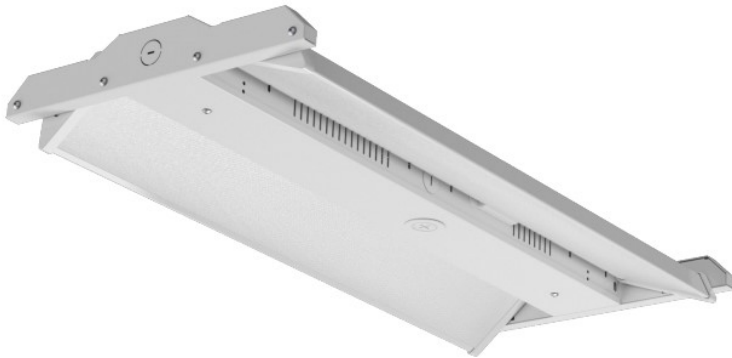


| |
|---------------|
| PROJECT NAME: |
| NOTES: |
| PART NUMBER: |
| DATE: |

ADJUSTABLE LINEAR HIGH BAY—SELECTABLE



PRODUCT DESCRIPTION:

The LED Adjustable Linear High Bay is an economical solution for any high bay application. With LPW higher than 140 across all settings, the TechBrite Adjustable Linear High Bay is a top seller. This Adjustable Linear High Bay is easy to upgrade with an occupancy sensor and emergency backup system. Multiple lumen configurations provide a lumen range between 10,000 and 31,000 lumens. The design is compact, yet large enough to allow for a wide variety of features. The LED Adjustable Linear High Bay is an economical choice for retrofit or new construction.



FEATURES:

- Field Selectable CCT and Wattage
- V-hooks & 3 ft Chain-mount Included
- Optics Rotate up to 135°
- Optional Emergency Driver Available
- 0-10v Dimming Standard
- Wire Guards Available
- Screw in Sensor Ready
- 347-480v Achieved With Step-down Transformer
- Limited Warranty: 5 Years on Luminaire

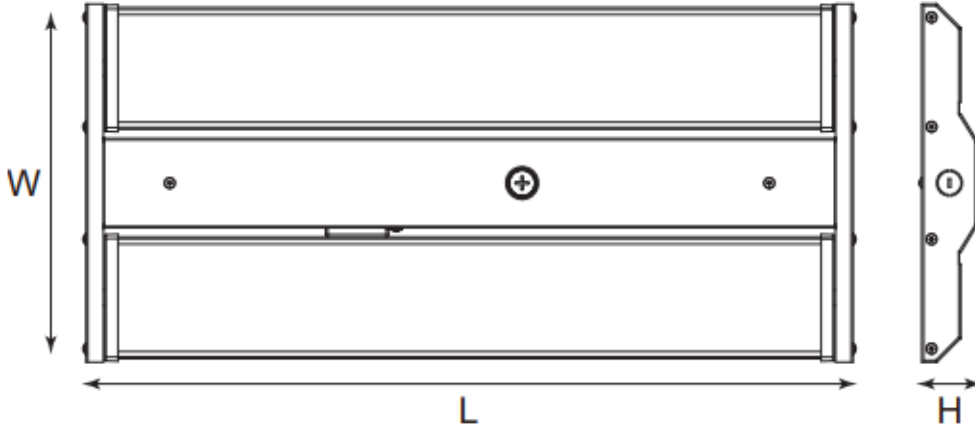
ORDERING GUIDE:

SAMPLE PART NUMBER: HBLASR-15129L-4K5K

| Series | | Nominal Lumen Output | | Selectable CCT | | Input Voltage | | Emergency Driver | |
|--------|------------------------------|----------------------|------------------------|----------------|-------------------|---------------|----------|------------------|-------|
| HBLASR | High Bay Linear Sensor Ready | 15129L | 15,000/ 12,000/ 9,000 | 4K5K | 4,000 / 5,000 CCT | UNC* | 347-480v | EM10 | 10W |
| | | 241815L | 24,000/ 18,000/ 15,000 | | | Blank | 120-277v | EM13 | 13W |
| | | 302418L | 30,000/ 24,000/ 18,000 | | | | | EM25 | 25W |
| | | | | | | | | Blank | No EM |

* UNC option not compatible with EM

DIMENSIONS:



| Part # | Length | Width | Height | Weight |
|---------------------|--------|-------|--------|---------|
| HBLASR-15129L-4K5K | 25.8" | 12.1" | 1.9" | 7.5 lbs |
| HBLASR-241815L-4K5K | 25.8" | 12.1" | 1.9" | 7.5 lbs |
| HBLASR-302418L-4K5K | 25.8" | 12.1" | 1.9" | 7.5 lbs |

PERFORMANCE SPECIFICATIONS:

| | |
|------------------|---------------------|
| CRI | >80 |
| L70 | L70 @ > 148,000 hrs |
| L90 | L90 @ > 44,000 hrs |
| Max Ambient Temp | 122° F |
| Min Ambient Temp | -40° F |
| Dimming Standard | 0-10v |
| Input Surge | 6kV |
| Power Factor | >.90 |
| Lens | Polycarbonate |

ELECTRICAL DATA:

| HBLASR-15129L-4K5K | Low Lumens | | Mid Lumens | | High Lumens | |
|--------------------------|--------------|--------------|--------------|--------------|--------------|--------------|
| | 4000K | 5000K | 4000K | 5000K | 4000K | 5000K |
| Lumens | 9,935 | 9,886 | 12,681 | 12,531 | 15,819 | 15,495 |
| Watts | 64 | 65 | 8 | 85 | 107 | 109 |
| Efficacy | 155 | 152 | 152 | 147 | 148 | 142 |
| Input Current (A) | 120V = 0.53A | 120V = 0.54A | 120V = 0.69A | 120V = 0.71A | 120V = 0.89A | 120V = 0.91A |
| | 240V = 0.27A | 240V = 0.27A | 240V = 0.35A | 240V = 0.35A | 240V = 0.44A | 240V = 0.46A |
| | 277V = 0.23A | 277V = 0.23A | 277V = 0.30A | 277V = 0.31A | 277V = 0.39A | 277V = 0.39A |

| HBLASR-241815L-4K5K | Low Lumens | | Mid Lumens | | High Lumens | |
|--------------------------|--------------|--------------|--------------|--------------|--------------|--------------|
| | 4000K | 5000K | 4000K | 5000K | 4000K | 5000K |
| Lumens | 15,038 | 15,043 | 17,959 | 17,769 | 23,645 | 23,141 |
| Watts | 95 | 97 | 115 | 117 | 157 | 160 |
| Efficacy | 158 | 156 | 156 | 152 | 150 | 144 |
| Input Current (A) | 120V = 0.79A | 120V = 0.81A | 120V = 0.96A | 120V = 0.98A | 120V = 1.31A | 120V = 1.34A |
| | 240V = 0.40A | 240V = 0.40A | 240V = 0.48A | 240V = 0.49A | 240V = 0.66A | 240V = 0.67A |
| | 277V = 0.34A | 277V = 0.35A | 277V = 0.42A | 277V = 0.42A | 277V = 0.57A | 277V = 0.58A |

| HBLASR-302418L-4K5K | Low Lumens | | Mid Lumens | | High Lumens | |
|--------------------------|--------------|--------------|--------------|--------------|--------------|--------------|
| | 4000K | 5000K | 4000K | 5000K | 4000K | 5000K |
| Lumens | 19,469 | 19,158 | 25,457 | 24,825 | 31,090 | 30,160 |
| Watts | 121 | 123 | 163 | 165 | 205 | 210 |
| Efficacy | 161 | 156 | 157 | 150 | 151 | 144 |
| Input Current (A) | 120V = 1.01A | 120V = 1.02A | 120V = 1.35A | 120V = 1.38A | 120V = 1.71A | 120V = 1.75A |
| | 240V = 0.50A | 240V = 0.51A | 240V = 0.68A | 240V = 0.69A | 240V = 0.86A | 240V = 0.87A |
| | 277V = 0.44A | 277V = 0.44A | 277V = 0.59A | 277V = 0.60A | 277V = 0.74A | 277V = 0.76A |

ACCESSORIES (ORDER SEPARATELY):

| SENSOR: | |
|----------------|---|
| HD07VR-PH-1: | Passive infrared sensor - maximum mounting height = 39 FT, factory settings: detection area = 100%, hold time = 5 sec, stand-by period = 0 sec, stand-by dimming level = 10%, daylight threshold = disabled |
| HD07VR-MH-B-1: | Microwave step-dimming sensor - maximum mounting height = 49 FT, factory settings: detection area = 100%, hold time = 5 sec, stand-by period = 0 sec, stand-by dimming level = 10%, daylight threshold = disabled |
| HD05R: | Remote control for HD07VR-PH-1 & HD07VR-MH-B-1 (required to change factory settings) |

| WIRE GUARD: | |
|--------------------|----------------------------------|
| HBLASR-WGK-24x4 | WIRE GUARD FOR ALL HBLASR MODELS |

| MOUNTING OPTIONS: | |
|--------------------------|---|
| HBLASR-SMK: | Surface mount kit for HBLASR - all models (not compatible with UNC or EM options) |
| HBLASR-PMK: | Pendant mount for HBLASR - all models (not compatible with UNC or EM options) |

| REMOTE MOUNT EM DRIVERS: | |
|---------------------------------|--|
| BLEM-CP-10C | 10W EMERGENCY DRIVER WITH CONDUIT - EM10 |
| BLEM-CP-13C | 13W EMERGENCY DRIVER WITH CONDUIT - EM13 |